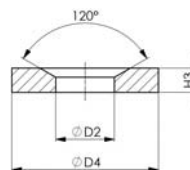


**format** professional quality **Rondella concava**

Rondella concava **DIN 6319 D** in acciaio, cementata e fosfatata.



DIN 6319D



Codice	€	Per filetto	Ø D2 (mm)	Ø D4 (mm)	H3 (mm)
C603870110	---	M8	9,6	17	3,5
C603870120	---	M10	12	21	4,2
C603870130	---	M12	14,2	24	5
C603870140	---	M14	16,5	28	5,6

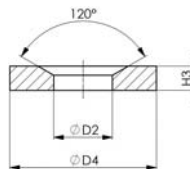
Codice	€	Per filetto	Ø D2 (mm)	Ø D4 (mm)	H3 (mm)
C603870150	---	M16	19	30	6,2
C603870160	---	M20	23,2	36	7,5
C603870170	---	M24	28	44	9,5

**format** professional quality **Rondella concava**

Rondella concava **DIN 6319 G** stampata e temprata.



DIN 6319G



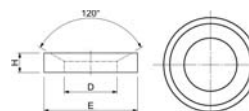
Codice	€	Per filetto	Ø D2 (mm)	Ø D4 (mm)	H3 (mm)
C603880110	---	M8	9,6	24	5
C603880120	---	M10	12	30	5
C603880130	---	M12	14,2	36	6
C603880140	---	M14	16,5	40	6

Codice	€	Per filetto	Ø D2 (mm)	Ø D4 (mm)	H3 (mm)
C603880150	---	M16	19	44	7
C603880160	---	M20	23,2	50	8
C603880170	---	M24	28	60	10



**Rondella concava**

Rondelle concave in acciaio automatico da bonifica.



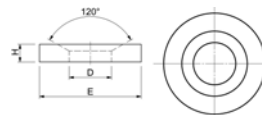
Codice	€	Pz.	Per filetto	D (mm)	E (mm)	H (mm)
C602550060	---	10	M6	7,1	12	2,8
C602550080	---	10	M8	9,6	17	3,5
C602550100	---	10	M10	12	21	4,2
C602550120	---	10	M12	14,2	24	5
C602550140	---	10	M14	16,5	28	5,6
C602550160	---	10	M16	19	30	6,2
C602550200	---	10	M20	23,2	36	7,5

Codice	€	Pz.	Per filetto	D (mm)	E (mm)	H (mm)
C602550240	---	10	M24	28	44	9,5
C602550270	---	1	M27	31,5	50	10,8
C602550300	---	1	M30	35	56	12
C602550360	---	1	M36	42	68	15
C602550420	---	1	M42	49	78	18
C602550480	---	1	M48	56	92	22



**Rondella concava**

Rondelle concave in acciaio automatico da bonifica.



Codice	€	Pz.	Per filetto	D (mm)	E (mm)	H (mm)
C602600060	---	10	M6	7,1	17	4
C602600080	---	10	M8	9,6	23	4
C602600100	---	10	M10	12	28	5
C602600120	---	10	M12	14,2	35	5
C602600140	---	10	M14	16,5	40	5
C602600160	---	10	M16	19	45	6

Codice	€	Pz.	Per filetto	D (mm)	E (mm)	H (mm)
C602600200	---	10	M20	23,2	50	8
C602600240	---	1	M24	28	60	10
C602600300	---	1	M30	35	68	10
C602600360	---	1	M36	42	80	12
C602600420	---	1	M42	49	100	15
C602600480	---	1	M48	56	110	17