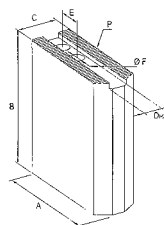




Morse e tavole per macchina • Fissaggio e staffaggio • Magneti • Mandrini idraulici e mandrini a forte serraggio • Mandrini HSK • Mandrini DIN ISO 7388-1 (ex DIN 69871) • Mandrini MAS-BT • Mandrini DIN 2080 • Pinze di serraggio ER • Accessori per mandrini • Codoli per mandrini • Teste ad angolo e moltiplicatori • Calettamento, bilanciatura e presetting • Tastatori e centrori • Schermi di protezione • Sbavatori • Lampade • Marcatura

### Morsetto tenero AUTOBLOK-SMW alto

Morsetto tenero **alto** per mandrini autocentranti AUTOBLOK-SMW pneumatici idraulici.



Codice	€	Per ø mandrini (mm)	A (mm)	B (mm)	C (mm)	D H7 (mm)	E (mm)	ø F (mm)	Passo P
C053100005	---	125-130	60	40	30	12	16	9	1/16" x 90°
C053100010	---	125-130	60	50	30	12	16	9	1/16" x 90°
C053100015	---	125-130	60	60	30	12	16	9	1/16" x 90°
C053100020	---	165-170	70	60	35	14	16,5	11	1/16" x 90°
C053100025	---	165-170	70	80	35	14	16,5	11	1/16" x 90°
C053100030	---	165-170	70	100	35	14	16,5	11	1/16" x 90°
C053100035	---	180	80	50	35	14	16,5	11	1/16" x 90°
C053100040	---	180	80	60	35	14	16,5	11	1/16" x 90°
C053100045	---	180	80	80	35	14	16,5	11	1/16" x 90°
C053100050	---	180	80	100	35	14	16,5	11	1/16" x 90°
C053100055	---	200-210	90	60	40	17	23	13	1/16" x 90°
C053100060	---	200-210	90	80	40	17	23	13	1/16" x 90°
C053100065	---	200-210	90	100	40	17	23	13	1/16" x 90°
C053100070	---	200-210	90	120	40	17	23	13	1/16" x 90°
C053100075	---	225	105	60	40	17	23	13	1/16" x 90°
C053100080	---	225	105	80	40	17	23	13	1/16" x 90°
C053100085	---	225	105	100	40	17	23	13	1/16" x 90°
C053100090	---	225	105	120	40	17	23	13	1/16" x 90°
C053100095	---	250	110	60	50	21	30	17	1/16" x 90°
C053100100	---	250	110	70	50	21	30	17	1/16" x 90°

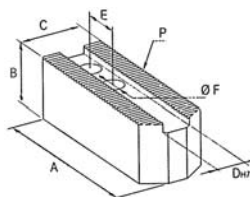
Codice	€	Per ø mandrini (mm)	A (mm)	B (mm)	C (mm)	D H7 (mm)	E (mm)	ø F (mm)	Passo P
C053100105	---	250	110	80	50	21	30	17	1/16" x 90°
C053100110	---	250	110	100	50	21	30	17	1/16" x 90°
C053100115	---	250	110	120	50	21	30	17	1/16" x 90°
C053100120	---	315	140	60	50	21	30	17	1/16" x 90°
C053100125	---	315	125	70	50	21	30	17	1/16" x 90°
C053100130	---	315	125	80	50	21	30	17	1/16" x 90°
C053100135	---	315	125	100	50	21	30	17	1/16" x 90°
C053100140	---	315	125	120	50	21	30	17	1/16" x 90°
C053100145	---	315	125	150	50	21	30	17	1/16" x 90°
C053100150	---	400	140	80	60	21	34	17	1/16" x 90°
C053100155	---	400	140	120	60	21	34	17	1/16" x 90°
C053100160	---	400	140	150	60	21	34	17	1/16" x 90°
C053100165	---	400-500-630	140	80	60	25,5	38	21	3/32" x 90°
C053100170	---	400-500-800	160	100	60	25,5	38	21	3/32" x 90°
C053100175	---	400-500-800	160	120	60	25,5	38	21	3/32" x 90°
C053100180	---	400-500-800	160	150	60	25,5	38	21	3/32" x 90°
C053100185	---	500-630-800	170	80	60	28	38	21	3/32" x 90°
C053100190	---	500-630-800	170	100	60	28	38	21	3/32" x 90°
C053100195	---	500-630-800	170	120	60	28	38	21	3/32" x 90°
C053100200	---	500-630-800	170	150	60	28	38	21	3/32" x 90°

2

MANDRINI PER TORNO

### Morsetto tenero AUTOBLOK-SMW

Morsetto tenero **con dentatura metrica P = 1,5x60°** per mandrini autocentranti AUTOBLOK-SMW pneumatici idraulici.



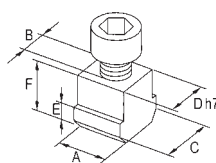
Codice	€	Per ø mandrini (mm)	A (mm)	B (mm)	C (mm)	D H7 (mm)	E (mm)	ø F (mm)	Passo P
C053150005	---	125-130-140	60	30	30	12	16	9	1,5 x 60°
C053150015	---	165-170	70	35	35	14	16,5	11	1,5 x 60°
C053150025	---	210	90	40	40	17	23	13	1,5 x 60°

Codice	€	Per ø mandrini (mm)	A (mm)	B (mm)	C (mm)	D H7 (mm)	E (mm)	ø F (mm)	Passo P
C053150035	---	250	110	50	50	21	30	17	1,5 x 60°
C053150040	---	305-315	125	50	50	21	30	17	1,5 x 60°
C053150045	---	400	140	60	60	21	34	17	1,5 x 60°

### Tassello singolo AUTOBLOK-SMW

Tassello singolo per mandrini autocentranti AUTOBLOK-SMW pneumatici idraulici.

Fornito senza viti.



Codice	€	Per ø mandrini (mm)	A (mm)	B	C (mm)	D H7 (mm)	E (mm)	F (mm)
C053200005	---	125	14	M8	17	12	6	15
C053200010	---	165-170	18	M10	20	14	8	20
C053200015	---	200-210-220	18	M12	22	17	8	22
C053200020	---	250-315-400	24	M16	29	21	11	25

Codice	€	Per ø mandrini (mm)	A (mm)	B	C (mm)	D H7 (mm)	E (mm)	F (mm)
C053200025	---	500-630	32	M20	35	28	15	35
C053200030	---	800	32	M20	40	28	16	40
C053200035	---	400-500-630	30	M20	35	25,5	15	35