

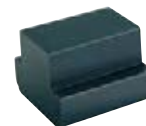
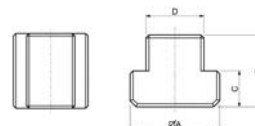


## Tassello per cava a T senza foro

Tassello per cava a T senza foro, in acciaio da bonifica, classe 8.8, DIN 508R.



DIN 508R



Codice	€	D (mm)	A (mm)	B (mm)	C (mm)	Cava (mm)
C602270005	---	7,7	13x13	10	6	8
C602270010	---	9,7	15x15	12	6	10
C602270015	---	11,7	18x18	14	7	12
C602270020	---	13,7	22x22	16	8	14
C602270025	---	15,7	25x25	18	9	16
C602270030	---	17,7	28x28	20	10	18
C602270035	---	19,7	32x32	24	12	20

Codice	€	D (mm)	A (mm)	B (mm)	C (mm)	Cava (mm)
C602270040	---	21,7	35x35	28	14	22
C602270045	---	23,7	40x40	32	16	24
C602270050	---	27,7	44x44	36	18	28
C602270055	---	31,6	50x50	40	20	32
C602270060	---	35,6	54x54	44	22	36
C602270065	---	41,6	65x65	52	26	42

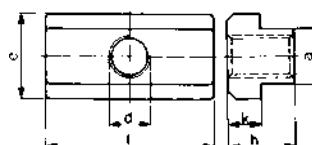


## Tassello per cava a T doppia lunghezza

Tassello per cava a T doppia lunghezza, in acciaio da bonifica, DIN 508L.



DIN 508



Codice	€	d	a (mm)	Cava (mm)	e (mm)	l (mm)	h (mm)	k (mm)
C609030010	---	M6	7,7	8	13	26	10	6
C609030020	---	M8	9,7	10	15	30	12	6
C609030030	---	M10	11,7	12	18	36	14	7
C609030040	---	M12	13,7	14	22	44	16	8

Codice	€	d	a (mm)	Cava (mm)	e (mm)	l (mm)	h (mm)	k (mm)
C609030060	---	M16	17,7	18	28	56	20	10
C609030080	---	M20	21,7	22	35	70	28	14
C609030090	---	M24	27,7	28	44	88	36	18

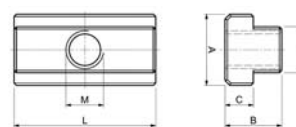


## Tassello per cava a T doppia lunghezza

Tassello per cava a T doppia lunghezza, in acciaio da bonifica, DIN 508L.



DIN 508



Codice	€	Pz.	M	D (mm)	L (mm)	A (mm)	B (mm)	C (mm)	Cava (mm)
C602280005	---	10	6	7,7	26	13	10	6	8
C602280010	---	10	8	9,7	30	15	12	6	10
C602280015	---	10	10	11,7	36	18	14	7	12
C602280020	---	10	12	13,7	44	22	16	8	14
C602280025	---	10	14	15,7	50	25	18	9	16
C602280030	---	10	16	17,7	56	28	20	10	18

Codice	€	Pz.	M	D (mm)	L (mm)	A (mm)	B (mm)	C (mm)	Cava (mm)
C602280035	---	1	18	19,7	64	32	24	12	20
C602280040	---	1	20	21,7	70	35	28	14	22
C602280045	---	1	22	23,7	80	40	32	16	24
C602280050	---	1	24	27,7	88	44	36	18	28
C602280055	---	1	27	31,6	100	50	40	20	32
C602280060	---	1	30	35,6	108	54	44	22	36



## Tassello romboidale per cave T

Tassello romboidale per cave T, in acciaio da bonifica, Nr 510.



Codice	€	M	D (mm)	A (mm)	B (mm)	C (mm)	Cava (mm)
C602300005	---	10	11,7	18	14	7	12
C602300010	---	10	13,7	22	16	8	14
C602300015	---	10	17,7	28	20	10	18
C602300020	---	12	13,7	22	16	8	14
C602300025	---	14	15,7	25	18	9	16
C602300030	---	16	17,7	28	20	10	18
C602300035	---	16	19,7	32	24	12	20

Codice	€	M	D (mm)	A (mm)	B (mm)	C (mm)	Cava (mm)
C602300040	---	16	21,7	35	28	14	22
C602300045	---	16	27,7	44	36	18	28
C602300050	---	18	19,7	32	24	12	20
C602300055	---	20	21,7	35	28	14	22
C602300060	---	24	27,7	44	36	18	28
C602300065	---	30	35,6	54	44	22	36

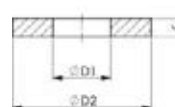


## Rondella normale piatta

Rondella normale piatta DIN 6340, in acciaio temprato.



DIN 6340



Codice	€	Per filetto	Ø D1 (mm)	Ø D2 (mm)	s (mm)
C609090005	---	M6	6,4	17	3
C609090010	---	M8	8,4	23	4
C609090020	---	M10	10,5	28	4
C609090030	---	M12	13	35	5

Codice	€	Per filetto	Ø D1 (mm)	Ø D2 (mm)	s (mm)
C609090040	---	M14	15	40	5
C609090050	---	M16	17	45	6
C609090070	---	M20	21	50	6
C609090090	---	M24	25	60	8