

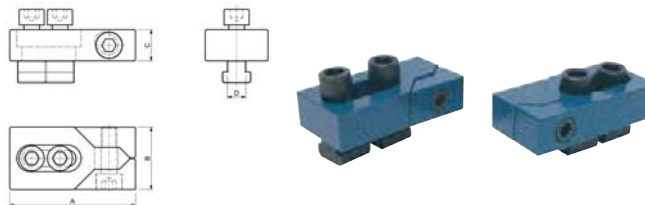


Morse e tavole per macchina • **Fissaggio e staffaggio** • Magneti • Mandrini idraulici • Mandrini DIN ISO 12164-1 • Mandrini DIN ISO 7388-1 • Mandrini DIN ISO 7388-2 • Mandrini DIN 2080 • Pinze di serraggio ER • Accessori per mandrini • Codoli per mandrini • Teste ad angolo e moltiplicatori • Calettamento, bilanciatura e presetting • Tastatori e centrori • Schermi di protezione • Sbavatori • Lampade • Marcatura



Morsetto laterale

Morsetti laterali, in acciaio da bonifica verniciato, a cuneo per permettere il bloccaggio contemporaneo del pezzo in senso verticale ed orizzontale, **forniti in coppia, Nr. 6490.**



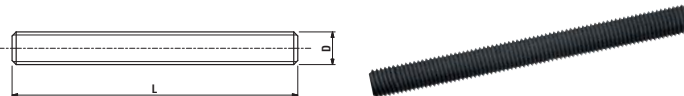
Codice	€	A (mm)	B (mm)	C (mm)	D (mm)	Cava (mm)	Viti (M)
C600800005	---	80	40	20	11,7	12	10
C600800010	---	80	40	20	13,7	14	10
C600800015	---	100	50	25	15,7	16	14
C600800020	---	100	50	25	17,7	18	14
C600800025	---	100	50	25	19,7	20	14

Codice	€	A (mm)	B (mm)	C (mm)	D (mm)	Cava (mm)	Viti (M)
C600800030	---	140	78	30	21,7	22	20
C600800035	---	140	78	30	23,7	24	20
C600800040	---	140	78	30	27,7	28	20
C600800045	---	140	78	30	29,7	30	20



Barra filettata

Barra filettata, in acciaio 42CrMoS4, **classe 10.9**, filettatura rollata.



Codice	€	D	L (mm)
C601050060	---	M6	1000
C601050080	---	M8	1000
C601050100	---	M10	1000
C601050120	---	M12	1000
C601050140	---	M14	1000
C601050160	---	M16	1000
C601050180	---	M18	1000
C601050200	---	M20	1000

Codice	€	D	L (mm)
C601050220	---	M22	1000
C601050240	---	M24	1000
C601050270	---	M27	1000
C601050300	---	M30	1000
C601050360	---	M36	1000
C601050420	---	M42	1000
C601050480	---	M48	1000

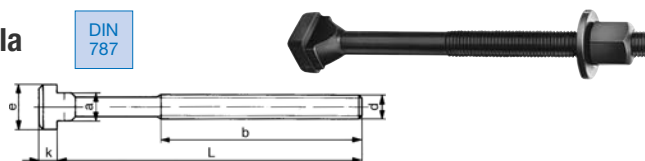


Vite per cave a T completa di dado e rondella

Vite per cave a T, in acciaio 42CrMoS4, da M6-M12 **classe 10.9** e da M14-M24 **classe 8.8**, filettatura rollata **DIN 787**, completa di dado e rondella.



DIN 787



Codice	€	d	L (mm)	a (mm)	b (mm)	e (mm)	k (mm)	Cava (mm)
C609005040	---	M12	50	11,7	35	18	7	12
C609005050	---	M12	80	11,7	55	18	7	12
C609005070	---	M12	50	13,7	35	22	8	14
C609005080	---	M12	80	13,7	55	22	8	14
C609005090	---	M12	125	13,7	75	22	8	14
C609005096	---	M14	100	15,7	65	25	9	16
C609005097	---	M14	160	15,7	100	25	9	16
C609005100	---	M16	63	15,7	45	25	9	16
C609005110	---	M16	100	15,7	65	25	9	16
C609005120	---	M16	160	15,7	100	25	9	16

Codice	€	d	L (mm)	a (mm)	b (mm)	e (mm)	k (mm)	Cava (mm)
C609005140	---	M16	100	17,7	65	28	10	18
C609005145	---	M16	125	17,7	85	28	10	18
C609005150	---	M16	160	17,7	100	28	10	18
C609005170	---	M20	125	19,7	85	32	12	20
C609005172	---	M20	200	19,7	125	32	12	20
C609005180	---	M20	125	21,7	85	35	14	22
C609005182	---	M20	200	21,7	125	35	14	22
C609005188	---	M24	100	27,7	70	44	18	28
C609005190	---	M24	160	27,7	110	44	18	28
C609005200	---	M24	250	27,7	150	44	18	28



Vite per cave a T

Vite per cave a T, in acciaio 42CrMoS4, **classe 10.9**, filettatura rollata.



Codice	€	D	L (mm)	B (mm)	A (mm)	T (mm)	H (mm)	Cava (mm)
C601100005	---	M10	40	30	9,7	15	6	10
C601100010	---	M10	63	45	9,7	15	6	10
C601100015	---	M10	80	55	9,7	15	6	10
C601100020	---	M10	100	60	9,7	15	6	10
C601100025	---	M10	125	75	9,7	15	6	10
C601100030	---	M10	150	100	9,7	15	6	10
C601100035	---	M10	170	100	9,7	15	6	10
C601100040	---	M12	50	35	11,7	18	7	12
C601100045	---	M12	63	45	11,7	18	7	12
C601100050	---	M12	80	55	11,7	18	7	12

Codice	€	D	L (mm)	B (mm)	A (mm)	T (mm)	H (mm)	Cava (mm)
C601100055	---	M12	100	60	11,7	18	7	12
C601100060	---	M12	125	75	11,7	18	7	12
C601100065	---	M12	150	100	11,7	18	7	12
C601100070	---	M12	170	100	11,7	18	7	12
C601100075	---	M12	200	120	11,7	18	7	12
C601100080	---	M14	63	40	13,7	22	8	14
C601100085	---	M14	80	55	13,7	22	8	14
C601100090	---	M14	100	65	13,7	22	8	14
C601100095	---	M14	125	75	13,7	22	8	14
C601100100	---	M14	150	100	13,7	22	8	14

← Pagina precedente

Codice	€	D	L (mm)	B (mm)	A (mm)	T (mm)	H (mm)	Cava (mm)
C601100105	---	M14	170	100	13,7	22	8	14
C601100110	---	M14	200	125	13,7	22	8	14
C601100115	---	M14	230	150	13,7	22	8	14
C601100120	---	M16	63	45	15,7	25	9	16
C601100125	---	M16	80	55	15,7	25	9	16
C601100130	---	M16	100	63	15,7	25	9	16
C601100135	---	M16	125	75	15,7	25	9	16
C601100140	---	M16	150	100	15,7	25	9	16
C601100145	---	M16	160	100	15,7	25	9	16
C601100150	---	M16	170	100	15,7	25	9	16
C601100155	---	M16	200	125	15,7	25	9	16
C601100160	---	M16	230	150	15,7	25	9	16
C601100165	---	M16	250	150	15,7	25	9	16
C601100170	---	M18	80	55	17,7	28	10	18
C601100175	---	M18	100	65	17,7	28	10	18
C601100180	---	M18	125	85	17,7	28	10	18
C601100185	---	M18	150	100	17,7	28	10	18
C601100190	---	M18	170	100	17,7	28	10	18
C601100195	---	M18	200	125	17,7	28	10	18
C601100200	---	M18	230	150	17,7	28	10	18
C601100205	---	M20	80	55	19,7	32	12	20
C601100210	---	M20	100	63	19,7	32	12	20
C601100215	---	M20	125	85	19,7	32	12	20

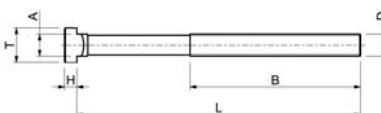
Codice	€	D	L (mm)	B (mm)	A (mm)	T (mm)	H (mm)	Cava (mm)
C601100220	---	M20	150	100	19,7	32	12	20
C601100225	---	M20	160	110	19,7	32	12	20
C601100230	---	M20	170	100	19,7	32	12	20
C601100235	---	M20	200	125	19,7	32	12	20
C601100240	---	M20	230	150	19,7	32	12	20
C601100245	---	M20	315	190	19,7	32	12	20
C601100250	---	M22	80	55	21,7	35	14	22
C601100255	---	M22	100	63	21,7	35	14	22
C601100260	---	M22	125	85	21,7	35	14	22
C601100265	---	M22	150	100	21,7	35	14	22
C601100270	---	M22	170	100	21,7	35	14	22
C601100275	---	M22	200	125	21,7	35	14	22
C601100280	---	M22	230	150	21,7	35	14	22
C601100285	---	M24	80	55	23,7	40	16	24
C601100290	---	M24	100	70	23,7	40	16	24
C601100295	---	M24	125	85	23,7	40	16	24
C601100300	---	M24	150	100	23,7	40	16	24
C601100305	---	M24	160	110	23,7	40	16	24
C601100310	---	M24	170	100	23,7	40	16	24
C601100315	---	M24	200	125	23,7	40	16	24
C601100320	---	M24	230	150	23,7	40	16	24
C601100325	---	M24	250	150	23,7	40	16	24



Vite per cave a T testa maggiorata



Vite per cave a T con testa maggiorata in acciaio 42CrMoS4, classe 10.9, filettatura rollata.



Codice	€	D	L (mm)	B (mm)	A (mm)	T (mm)	H (mm)	Cava (mm)
C601250005	---	M16	93	55	15,7	28	12	16
C601250010	---	M16	120	75	15,7	28	12	16
C601250015	---	M16	150	100	15,7	28	12	16
C601250020	---	M16	200	125	15,7	28	12	16
C601250025	---	M16	225	160	15,7	28	12	16
C601250030	---	M16	250	160	15,7	28	12	16
C601250035	---	M16	300	180	15,7	28	12	16
C601250040	---	M18	120	75	17,7	35	14	18
C601250045	---	M18	150	100	17,7	35	14	18
C601250050	---	M18	200	125	17,7	35	14	18
C601250055	---	M18	225	150	17,7	35	14	18
C601250060	---	M18	250	150	17,7	35	14	18
C601250065	---	M18	300	190	17,7	35	14	18

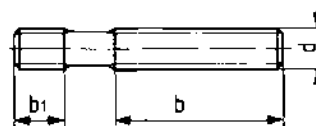
Codice	€	D	L (mm)	B (mm)	A (mm)	T (mm)	H (mm)	Cava (mm)
C601250070	---	M20	120	75	19,7	40	16	20
C601250075	---	M20	150	100	19,7	40	16	20
C601250080	---	M20	200	125	19,7	40	16	20
C601250085	---	M20	225	150	19,7	40	16	20
C601250090	---	M20	250	150	19,7	40	16	20
C601250095	---	M20	300	190	19,7	40	16	20
C601250100	---	M24	120	75	23,7	44	20	24
C601250105	---	M24	150	100	23,7	44	20	24
C601250110	---	M24	200	125	23,7	44	20	24
C601250115	---	M24	225	150	23,7	44	20	24
C601250120	---	M24	250	150	23,7	44	20	24
C601250125	---	M24	300	190	23,7	44	20	24



Prigioniero singolo

DIN 6379

Prigioniero singolo in acciaio 42CrMoS4, da M6-M12 classe 10.9 e M14-M24 classe 8.8, filettatura rollata, DIN 6379.



Codice	€	d	b (mm)	L (mm)	b1 (mm)
C609010006	---	M8	20	63	11
C609010007	---	M8	40	80	11
C609010008	---	M8	63	40	11
C609010010	---	M10	25	100	13
C609010020	---	M10	50	125	13
C609010030	---	M10	75	160	13
C609010040	---	M10	122	200	13
C609010060	---	M12	32	63	15
C609010070	---	M12	50	80	15
C609010080	---	M12	63	100	15
C609010090	---	M12	75	125	15
C609010100	---	M12	122	200	15
C609010110	---	M14	32	63	17
C609010120	---	M14	63	100	17
C609010130	---	M14	100	160	17

Codice	€	d	b (mm)	L (mm)	b1 (mm)
C609010150	---	M16	50	80	19
C609010160	---	M16	63	100	19
C609010170	---	M16	75	125	19
C609010180	---	M16	100	160	19
C609010190	---	M16	160	250	19
C609010200	---	M20	32	80	27
C609010210	---	M20	70	125	27
C609010220	---	M20	122	200	27
C609010230	---	M20	160	250	27
C609010240	---	M20	190	315	27
C609010250	---	M20	315	500	27
C609010310	---	M24	100	160	35
C609010320	---	M24	160	250	35
C609010330	---	M24	250	400	35