



Morse e tavole per macchina • **Fissaggio e staffaggio** • Magneti • Mandrini idraulici • Mandrini DIN ISO 12164-1 • Mandrini DIN ISO 7388-1 • Mandrini DIN ISO 7388-2 • Mandrini DIN 2080 • Pinze di serraggio ER • Accessori per mandrini • Codoli per mandrini • Teste ad angolo e moltiplicatori • Calettamento, bilanciatura e presetting • Tastatori e centrori • Schermi di protezione • Sbavatori • Lampade • Marcatura



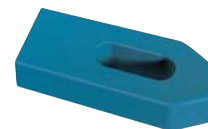
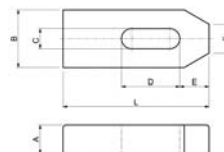
### Staffa semplice

Staffe semplici, in acciaio da bonifica verniciato, resistenza >700 N/mm<sup>2</sup>, **DIN 6314**.



Codice	€	A (mm)	B (mm)	L (mm)	C (mm)	D (mm)	E (mm)	F (mm)	Viti (M)
C600400005	---	10	20	50	7	20	10	8	6
C600400010	---	12	25	60	9	22	13	10	8
C600400015	---	15	30	80	11	30	15	12	10
C600400020	---	20	40	100	14	40	21	14	12-14
C600400025	---	20	40	125	14	50	21	14	12-14
C600400030	---	20	40	160	14	65	21	14	12-14
C600400035	---	25	50	125	18	45	26	18	16-18
C600400040	---	25	50	160	18	65	26	18	16-18

DIN 6314



Codice	€	A (mm)	B (mm)	L (mm)	C (mm)	D (mm)	E (mm)	F (mm)	Viti (M)
C600400045	---	25	50	200	18	80	26	18	16-18
C600400050	---	30	60	160	22	60	30	22	20-22
C600400055	---	30	60	200	22	80	30	22	20-22
C600400060	---	30	70	200	26	80	35	26	24
C600400065	---	30	70	250	26	105	35	26	24
C600400070	---	40	80	250	34	100	45	34	27-30
C600400075	---	40	80	315	34	130	45	34	27-30

FISSAGGIO E STAFFAGGIO

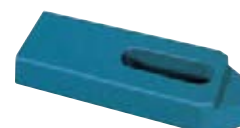
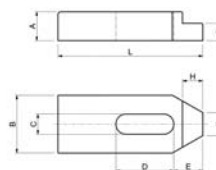


### Staffa semplice ridotta

Staffe semplici ridotte, in acciaio da bonifica verniciato, resistenza >700 N/mm<sup>2</sup>.



Codice	€	G (mm)	A (mm)	B (mm)	L (mm)	C (mm)	D (mm)	E (mm)	F (mm)	H (mm)	Viti (M)
C600450005	---	6	10	20	50	7	20	10	8	7	6
C600450010	---	7	12	25	60	9	22	13	10	10	8
C600450015	---	9	15	30	80	11	30	15	12	9	10
C600450020	---	12	20	40	100	14	40	21	14	12	12-14
C600450025	---	12	20	40	125	14	50	21	14	12	12-14
C600450030	---	12	20	40	160	14	65	26	14	12	12-14
C600450035	---	15	25	50	125	18	45	26	18	15	16-18
C600450040	---	15	25	50	160	18	65	26	18	15	16-18



Codice	€	G (mm)	A (mm)	B (mm)	L (mm)	C (mm)	D (mm)	E (mm)	F (mm)	H (mm)	Viti (M)
C600450045	---	15	25	50	200	18	80	26	18	15	16-18
C600450050	---	20	30	60	160	22	60	30	22	20	20-22
C600450055	---	20	30	60	200	22	80	30	22	20	20-22
C600450060	---	20	30	70	200	26	80	35	26	25	24
C600450065	---	20	30	70	250	26	105	35	26	25	24
C600450070	---	25	40	80	250	34	100	45	34	25	27-30
C600450075	---	25	40	80	315	34	130	45	34	25	27-30

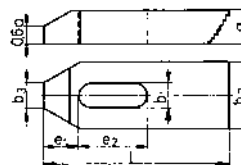


### Staffa dentata

Staffa dentata, in acciaio da bonifica verniciata.



Codice	€	a (mm)	b2 (mm)	l (mm)	b1 (mm)	e2 (mm)	e1 (mm)	b3 (mm)	Per vite (M)
C609190007	---	10	20	50	6,6	20	10	8	6
C609190009	---	12	25	60	9	22	13	10	8
C609190011	---	15	30	80	11	30	15	12	10
C609190013	---	15	30	125	11	70	15	12	10
C609190014	---	19	38	100	14	40	21	14	12/14



Codice	€	a (mm)	b2 (mm)	l (mm)	b1 (mm)	e2 (mm)	e1 (mm)	b3 (mm)	Per vite (M)
C609190017	---	19	38	160	14	90	21	14	12/14
C609190018	---	24	48	125	18	45	26	18	16/18
C609190021	---	24	48	200	18	110	26	18	16/18
C609190022	---	30	60	160	22	60	30	22	20/22

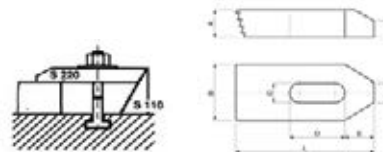


### Staffa dentata

Staffe dentate, in acciaio da bonifica verniciato, resistenza >700 N/mm<sup>2</sup>, **Nr. 6314Z**, da utilizzare con **cod. C60005**.



Codice	€	A (mm)	B (mm)	L (mm)	C (mm)	D (mm)	E (mm)	F (mm)	G (mm)	Viti (M)
C600500010	---	10	20	50	7	20	10	8	6	6
C600500012	---	12	25	60	9	22	13	10	8	8
C600500015	---	15	30	80	11	30	15	12	10	10
C600500020	---	20	40	100	14	40	21	14	12	12-14



Codice	€	A (mm)	B (mm)	L (mm)	C (mm)	D (mm)	E (mm)	F (mm)	G (mm)	Viti (M)
C600500025	---	25	50	125	18	45	26	18	15	16-18
C600500030	---	30	60	160	22	60	30	22	18	20-22
C600500031	---	30	70	200	26	80	35	26	18	24